



Town of Gravenhurst Façade Demonstration Sketches

April 2013

Stempski Kelly Associates Inc.

Planning Design Landscape Architecture
for Rural, Resort, & Amenity Landscapes

160 St. David St. South, Suite 202
Fergus, ON CANADA N1M 2L3



Town of Gravenhurst Façade Demonstration Sketches

■

© 2013. Stempski Kelly Associates Inc.
All rights reserved. No part of this publication may be reproduced in any form or by
any means without the written permission of Stempski Kelly Associates Inc.

Print Date: February 2013

Facades:

Bespoke Fitness/ Rancho Luna	1
Gem and Dia Jewellers	2
Knapp's Gravenhurst Furniture	3
6KG	4
Mighty Mart	5
Sears	6
Stedmans	7
Uptown Restaurant	8
Urban Textures	9
Vacation Time Real Estate Inc.	10

Demonstration

OPERA H

Stempski Kelly Associates Inc.



Existing Façade

Bespoke Fitness/ Rancho Luna

Colours

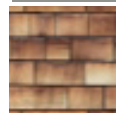
Base: Stone Harbour



Accent: Dolphin



Cedar Shingles



Trim: Clydesdale Brown



Refinish existing detail

Addition of window lintels; lintel and window frame in trim colour

Refinish existing siding with new base colour

Gooseneck lighting

Horizontal sign board in accent colour; raised letters in trim colour

Retractable, open side awning; trim and accent colour

Windows in trim colour

Business door/entrance in trim and accent colour

Shingle panels to emphasize 'Muskoka Cottage' theme



Existing Façade

Gem & Dia Jewellers

Colours

- Base: Sandy Hook Gray
- Accent: Calwell Green
- White Dove



- Strengthen/emphasize trim & cornice across facade
- Addition of window lintel in accent colour; upper windows framed in accent colour
- Use of horizontal siding to emphasize 'Muskoka Cottage' theme
- Trim & faux columns with capital and base; base and trim colour
- Gooseneck lighting
- Horizontal sign board in trim colour; raised letters in accent colour
- Awning in base colour; retractable; open sides
- Frame bottom panels & windows in base colour
- Evergreen planters to incorporate 'Gateway to Muskoka' theme



Existing Façade

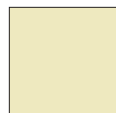
Knapp's Gravenhurst Furniture

Colours

Base: Sussex Green



Accent: Pittsfield Bluff



Trim: Branchport Brown



Trim & faux columns in accent and trim colour

Refinish existing brick in base colour



Strengthen/emphasize cornice across facade

Addition of window lintels; lintel and window frame in trim colour

Use of horizontal siding to emphasize 'Muskoka Cottage' theme

Secondary sign; blade sign perpendicular to building; designed to reflect 'Muskoka Cottage' theme

Gooseneck lighting

Horizontal sign board in accent colour; raised letters in base colour

Retractable, open side awning; base colour

Seasonal planters



Existing Façade

6KG



- Strengthen/emphasize cornice across facade
- Use of shingles to emphasize 'Muskoka Cottage' theme; unifies facades' architectural features
- Trim & faux columns; accent and trim colour
- New shutters
- Secondary sign; blade sign perpendicular to building; designed to reflect 'Muskoka Cottage' theme
- Gooseneck lighting
- Awning w/ valence; awning colour to complement tone of shingles; primary sign- lettering in accent colour
- Windows trimmed in accent colour
- Business door/entrance emphasized in trim colour
- Shingles to unify top with base of facade
- Seasonal planter

Colours

Base: Cedar Shingles

Dry Sage

Accent: White Dove

Trim: Florentine Plaster





Existing Façade

Mighty Mart



Colours

Base: Existing Brick



Arroyo Red



Accent: Timid White



Refinish existing siding with new base colour

Primary sign; blade sign perpendicular to building; designed to reflect 'Muskoka Cottage' theme

New wire cable fence system; opens space and enhances connections

New planting to soften perimeter of patio space

New shutters in base colour

Maintain existing bricks

Refinish existing siding with new base colour

Horizontal sign board in base colour; lettering in accent colour

Seasonal planters



Existing Façade

Colours

Base: Existing Stone



Whitall Brown



Accent: Richmond Gray



Trim: Great Barrington Green



Sears



Strengthen/emphasize cornice across facade

Addition of window lintels; lintel and window frame in trim colour

Refinish existing siding with new base colour

Horizontal sign board in accent colour; new Sears lettering

Extension of existing columns to full height of building






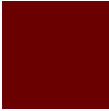
Maintain existing stone

Evergreen planters to incorporate 'Gateway to Muskoka' theme

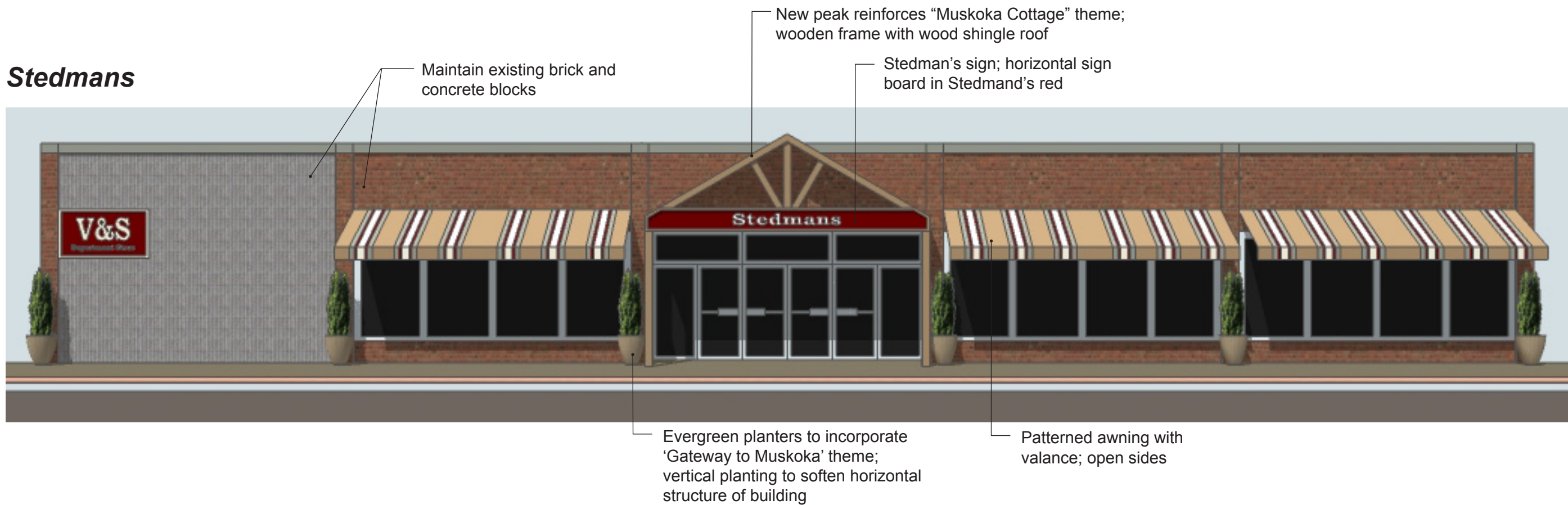


Existing Façade

Colours

Base: Existing Brick		Accent: Duxbury Gray	
Existing Concrete Blocks		Manchester Tan	
Maryville Brown		Signs: (Stedman's colour)	

Stedmans





Existing Façade

Uptown Restaurant

Colours

Base: Brester Gray



Accent: Clinton Brown



Trim: Coventry Gray



Timid White



Strengthen/emphasize trim & cornice across facade

Use of vertical siding (board and batten) to emphasize 'Muskoka Cottage' theme

New shutters in accent colour

Gooseneck lighting

Horizontal sign board in coventry gray; raised letters in 'Timid White'

Awning to emphasize building entrance; retractable with open sides; secondary signage

Awning with trim colour incorporated; retractable; open sides

Border existing windows and door frames in 'Timid White'

Evergreen planters to incorporate 'Gateway to Muskoka' theme

Seasonal planters



Existing Façade

Urban Textures



- Strengthen/emphasize cornice across facade
- Addition of window lintels; lintel and window frame in trim colour
- Refinish existing siding with new base colour
- Secondary sign; blade sign perpendicular to building; designed to reflect 'Muskoka Cottage' theme
- Retractable awning in accent colour; primary sign- lettering in base colour
- Extension of existing columns to full height of building
- Seasonal planters
- Evergreen planters to incorporate 'Gateway to Muskoka' theme
- Maintain existing stone

Colours

Base: Existing Stone



Great Barrington Green



Accent: Richmond Gray



Trim: Whitall Brown





Existing Façade

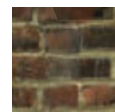
Vacation Time Real Estate Inc.



- Strengthen/emphasize cornice across facade
- Refinish existing siding with new base colour
- Secondary sign; blade sign perpendicular to building; designed to reflect 'Muskoka Cottage' theme
- Gooseneck lighting
- Horizontal sign board in base colour; raised letters
- Fixed awning to reflect 'Muskoka Cottage' theme; wood frame with steel? roof in trim colour
- Frame existing windows and door frames in trim colour
- Maintain existing brick
- Seasonal planters

Colours

Base: Existing Brick



Putnam Ivory



Trim: New London Burgundy

